

Central Nippon Expressway Company Limited

<https://www.c-nexco.co.jp/en/corporate/csr/>



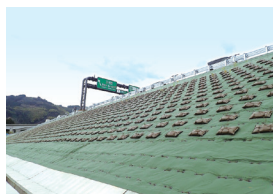
Policy for the future:

NEXCO Central will take following environmental initiatives: we will contribute to prevention of global warming by expanding the expressway networks, mitigating traffic congestions and energy conservation efforts. Also, we will be engaged in Eco-friendly activities, such as “Eco-Roads (environment-focused roads)”, based on the 3R(reduce, reuse and recycle) principle to minimize the environmental impacts, and be harmony with local inhabitants and environments.

Actions so far in Chubu-Odan Expwy and Shin-Meishin Expwy

To prevent global warming and preserve biodiversity, we have promoted to make the slopes of expressways grassy green by covering herbage. In mountainous areas, we have planted “local seedlings” grown from plants that grow naturally in the neighboring region to pursue conservation of biodiversity at genetic level.

As the inhabitation of “*Pseudobagrus ichikawai*”, in Japanese, “Nekogigi”, which is an endangered species and designated as a national natural treasure, were found in a river near these expressway construction sites, concrete measures were taken to keep water quality. Up until now, we can find the presence of “Nekogigi” by maintaining clean water.



Regional seedlings



Pseudobagrus ichikawai

For the future

We will continue to make efforts to reduce the impact on the local habitat and environment, and look toward passing our assets to future generation.